

CA 2E Web Option

At a Glance

CA 2E Web Option is an option for the CA 2E application development tool designed to help CA 2E customers to more quickly and easily develop web interfaces for their existing CA 2E-generated applications. CA 2E automatically generates the executable code and green-screen display definitions, and CA 2E Web Option generates web pages for each of those green-screens. The format of the information on the generated web pages is retrieved directly from the CA 2E model definition itself. The CA 2E Web Option generator is entirely data-driven, enabling customers to customize the layout and 'look-and-feel' of the generated web pages on a global basis.

Key benefits/results

- **Integration with CA 2E.** CA 2E Web Option integrates directly with CA 2E, enabling you to generate your web pages directly from the CA 2E model.
- **Integrated run-time server.** CA 2E Web Option run-time server works with the built-in Apache HTTP Server, with no additional software requirement.
- **No-charge run-time.** Because CA 2E Web Option run-time server is a no-charge component, web-enabled applications can be hosted on a production box with no on-going fee.

Key features

- **Simple and compliant.** Generated web pages use only HTML, JavaScript and Cascading Style Sheets.
- **Fast and scalable.** CA 2E Web Option server can scale to 10,000 concurrent users with sub-second performance.
- **No program changes.** No changes are required to your existing CA 2E-generated programs to work with CA 2E Web Option.
- **Highly customizable.** Data-driven generation means pages can be customized at the global level or on a per-page basis.
- **Secure access.** CA 2E Web Option uses system-level security and provides various automatic sign-on options for increased flexibility.
- **Easy to learn.** Existing CA 2E developers can be productive with CA 2E Web Option in a matter of hours.

Business challenges

The IBM i remains the server and platform of choice for thousands of organizations around the world. Organizations continue to seek IBM i experts, and CA 2E developers are highly regarded on this platform.

Many CA 2E customers are seeking a web presence to make information held on their IBM i available to their internal and external end users. However, those end users typically do not have access to a green-screen emulator nor do they want to view that data through an emulator interface.

Typically, companies have resorted to writing one-off CGI (Common Gateway Interface) programs and related web pages to enable end users to access certain data, while reserving their core CA 2E functionality for technical green-screen users. This can result in unnecessary complexity as more and more one-off programs are written to meet changing requirements, which then require ongoing maintenance. Additionally, concerns about the security of these hand-written programs accessing IBM i data force companies to look outside the IBM i for external solutions.

Finally, many existing CA 2E developers do not have the skills typically required of a web developer, such as knowledge of HTML, JavaScript and Cascading Style Sheets.

Solution overview

By using CA 2E Web Option, CA 2E users can simply create a web interface for their existing, tried and tested CA 2E programs. The web pages can be customized to add or remove functionality that exists on the green-screen interface, allowing a single underlying program to be used by both internal green-screen users and by end-users via a browser.

CA 2E Web Option generates 100% HTML 4.01 compliant web pages, which make use of JavaScript and Cascading Style Sheets to provide a fully customizable experience.

The CA 2E Web Option server works with the built-in Apache HTTP Server to provide a more secure, stable and configurable run-time, enabling end users to access existing green-screen programs using the CA 2E Web Option browser interface at the same time as green-screen users are accessing the same program.

Critical differentiators

The integration with the CA 2E model environment means that customization can be applied to screen elements (fields, text, headings) within the model, and those customizations will be used in every web page generated from a screen where those elements appear.

Developers are not required to know low-level details of the generated HTML or have more than a rudimentary understanding of web technologies or languages.

Because of the CA 2E Web Option integration with the CA 2E model environment, impact analysis and application documentation are embedded as part of the generation process. CA 2E Web Option web pages are held as source members and can be controlled using any source change management solution, including CA 2E Change Management.

Related products/solutions

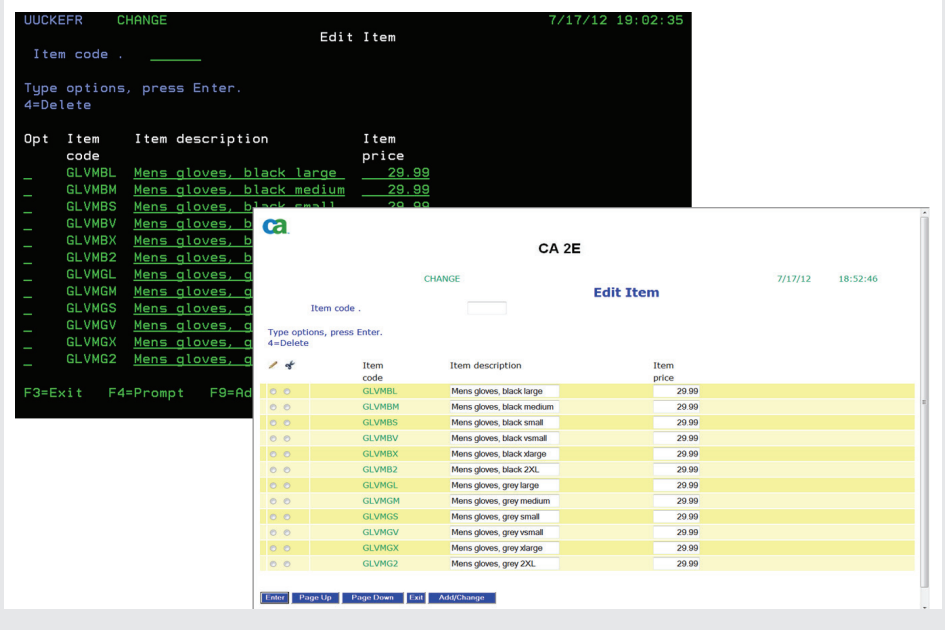
CA 2E.

CA Plex. Extends CA 2E applications to a number of GUI-based environments through migration or co-existence with this dynamic model-based development environment.

Supported environments

IBM i.

CA 2E application screen, both green-screen and in a browser using CA 2E Web Option.



For more information, please visit ca.com/us/products/detail/CA-2E.aspx

Agility Made Possible: the CA Technologies advantage

Today's business climate requires that organizations have business applications that help improve customer service, reduce costs, increase profits, go to market faster, and respond more rapidly to competitive challenges. CA 2E provides a single, integrated environment designed to accelerate development projects for mission critical applications running on IBM i. As the platform has evolved into SOA and web services approaches to development, CA 2E has done so as well, providing our customers with application lifecycles that are among the best in the industry.

CA 2E is supported by worldwide customer support, and an ecosystem of expert partners around the world who can assist with services and education. In addition, a large and active CA 2E user community helps connect users globally day in and day out.